



Recruitment Information

People **Make** Places



WELCOME



Welcome to **Batley Multi Academy Trust**

Thank you for expressing an interest in working within our Trust.

Our family of schools are here to ensure that all our children receive a first-class education coupled with the very best care, guidance and support. We work hard across our Trust to raise the aspirations of our young people, especially those from disadvantaged backgrounds. No child left behind. Ever.

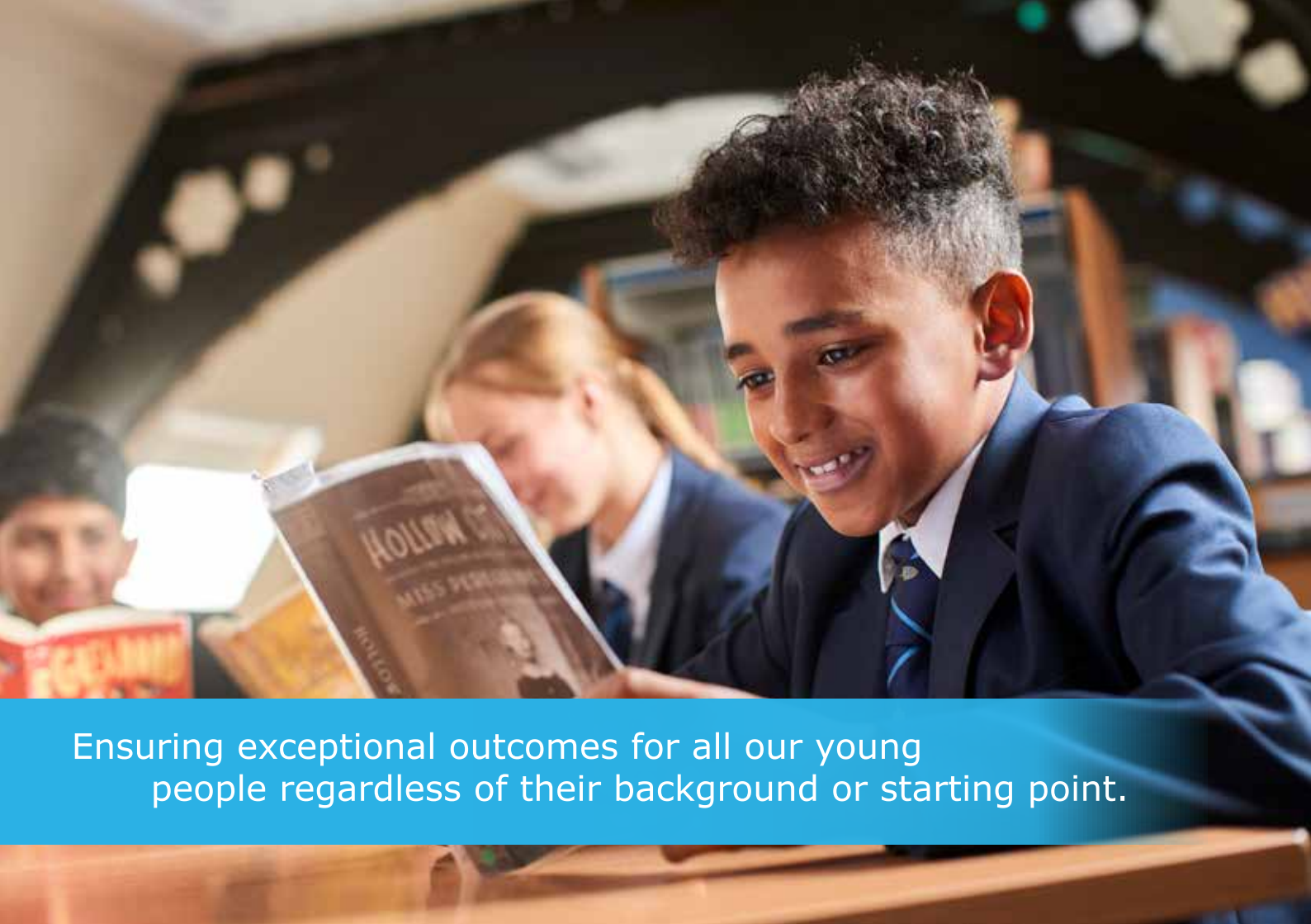
Our schools all have their own identity, and our school leaders all share the philosophy of effective collaboration where we celebrate the differences of each school through strong collaboration, to inspire everyone within our learning community to be the very best version of themselves every day. A strong ethos of mutual respect underpins our Trust, and our schools lie at the heart of their community. We believe that Community Makes Us, and the unity in community is key.

The success of our schools is thanks to the creative, talented and forward thinking colleagues who work within our teams. People Make Places. The hopes and aspirations of our children are best served when the adults work together to ensure those dreams become a reality. In our Trust we see our schools as being at the very heart of our community, and we have a key role in making a positive difference in children's lives and ensuring our young people are well prepared for adult life.

We would encourage you to look at our Trust and school websites for further information, and if you feel you could add further capacity to our excellent staff team we look forward to receiving your application.

Sam Vickers
Chief Executive Officer (CEO)





Ensuring exceptional outcomes for all our young people regardless of their background or starting point.

Our Trust **Values**



We place young people at the heart of everything.



Develop resilience for all our young people and staff to ensure a mind-set for success.



Collaborate to secure the best learning experiences for our young people and our staff.



Open doors for young people, parents & carers and our community by being inclusive and forward thinking.



Ensure all young people regardless of their background or starting point achieve exceptional educational outcomes.



Dynamic and reflective learning communities, celebrating the differences of each school's community, inspiring all stakeholders to be the best that they can be.



Raise aspirations and be ambitious for all our young people ensuring no child is left behind. Ever.



We have far more in common than that which divides us, and we celebrate equality, diversity and inclusivity.

Our **Family** Of Schools



Batley Girls' High School

Our inclusive, diverse and inspirational community stimulates girls to confidently learn, develop and nurture their interests. We are dedicated to continually improving, developing in innovative ways and always looking forward. We believe in empowering girls with a sense of ambition and developing their resilience, enabling them to learn to work together, and grow their passions and love of learning.



Upper Batley High School

We are an aspirational, innovative and forward-thinking learning community dedicated to educational success. We aim for excellence in everything we do, and are committed to securing great futures and the very best life chances for every young man in our care. We provide every young person regardless of their background or starting point, the education they deserve to transform their lives. Our bespoke curriculum provides high achievement for all, built on a culture of mutual respect and the firm foundations of Believe, Achieve and Succeed.



Healey Junior, Infant & Nursery School

Our focus is to ensure children are happy at school, love learning and become the best that they can be. Every child has unique talents, abilities and preferences in learning, and we assist each and every young person to develop the learning skills they need to thrive as they progress in life. We value effective partnerships with parents to ensure that learning continues beyond our school gates.



Field Lane Junior, Infant & Nursery School

"Together We Learn" describes the culture and ethos that permeates our school. We empower young people, parents and staff members to believe in themselves, develop their creativity and make a positive impact upon the world. Our curriculum is rich with challenge and full of opportunities for applying the skills and knowledge taught both indoors and outside. Our learners are happy, engaged, respectful and supportive of one another.



Batley Grammar School

We identify, encourage and develop the talents and qualities of each young person to their full potential and help to prepare them for adult life as confident, independent and respectful members of a caring multicultural society. We provide a stimulating learning environment that is full of opportunity and caters for the needs of all our children. We have a real family atmosphere and a commitment to giving every child the individual attention they need to thrive. We are proud of our 400-year history, and have evolved to provide an education fit for the 21st century.

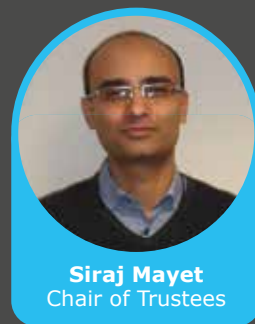
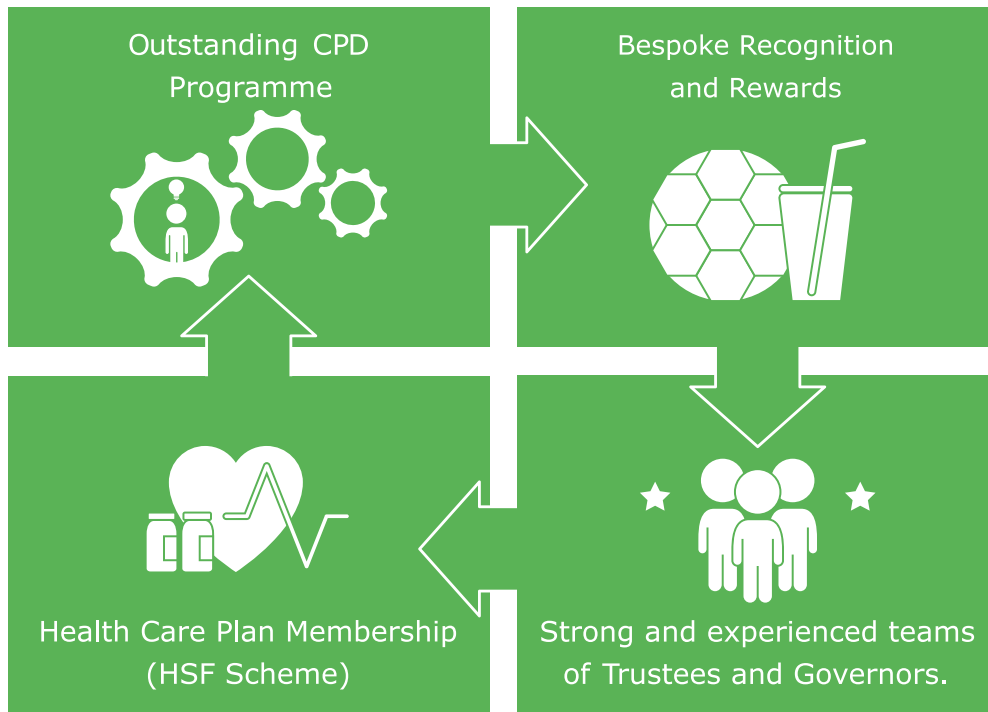


Manorfield Infant & Nursery School

We embody a culture where everyone has the same opportunities and experiences. Through nurturing children and allowing them to be inquisitive we are able to build confidence, empowering our children to develop effective communication skills, and give them high aspirations for the future. Through embedding an ethos of respect, our children have positive role models in school, to allow them to go on to be moral and respectful citizens.

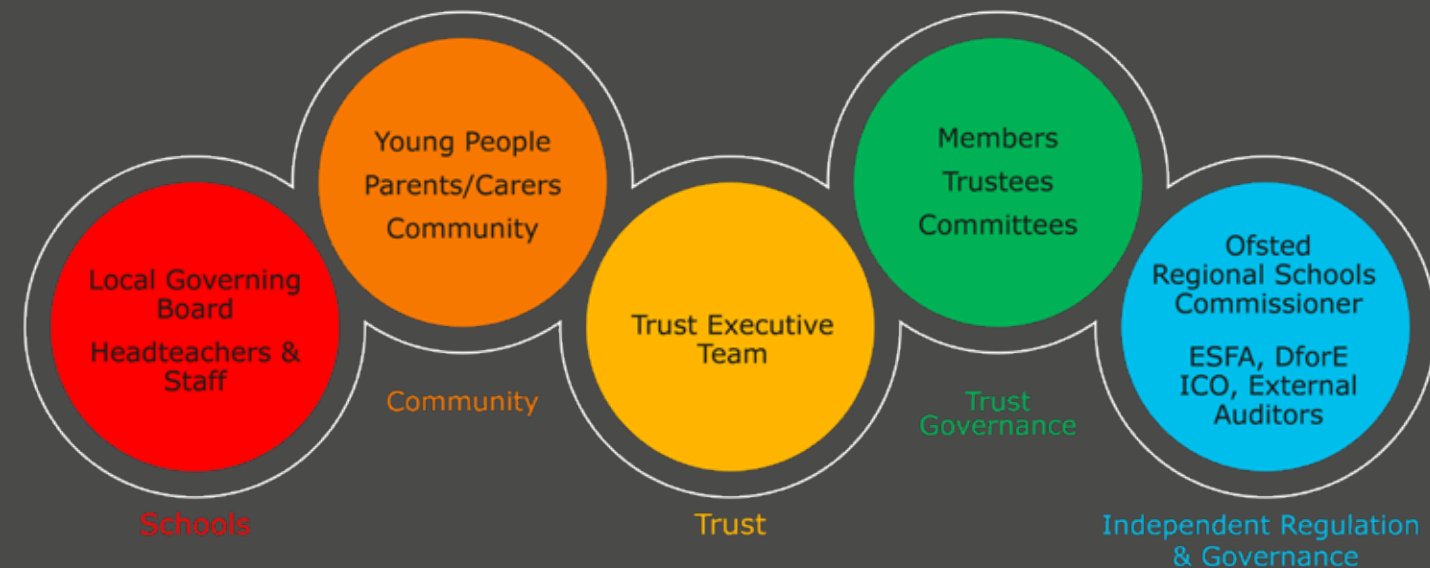
Why work **with** us?

We are passionate about developing the colleagues who work with us, and we invest in our people and their futures.



“Development for all staff is a priority. Having a great benefits package shows staff that we value their expertise, time and dedication.”

Our **Trust** Governance Structure

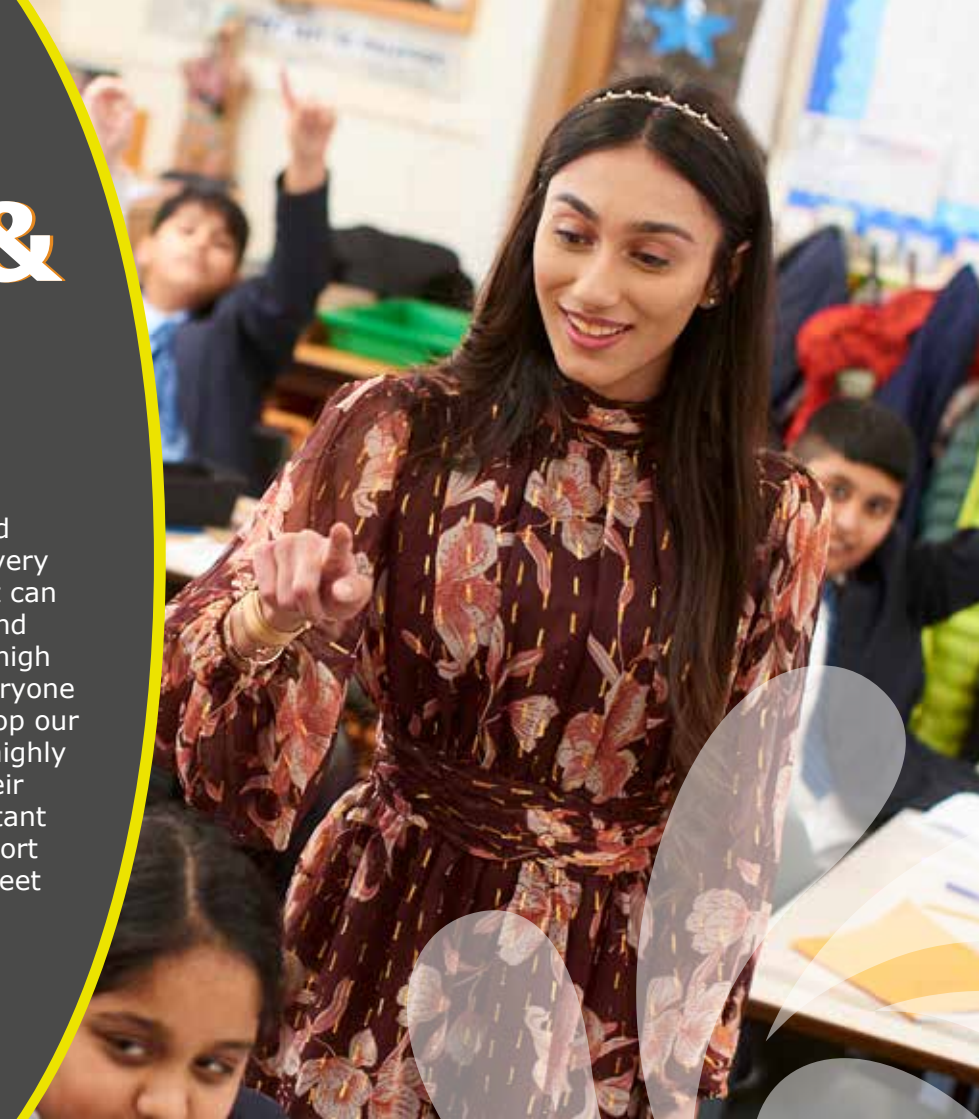




Our Trust People & Talent Team

Our dedicated, specialist People and Talent Team are highly skilled and very experienced. They ensure our Trust can meet the needs of all colleagues, and we pride ourselves on delivering a high quality, professional service for everyone to support, advise, grow and develop our whole staff team. All our staff are highly valued and hugely appreciated. Their career development is really important to us and we provide bespoke support and professional development to meet everyone's needs.

Lindsay McLean
Director of People and Talent





“

After six years of training at Leeds College of Building, my working life began as a Welding Engineer running my own business. My career to date, before joining the team here, remained solely in engineering.

I wanted to work with children so I joined the Trust as a caretaker working across all schools. Taking this new career direction has meant my work is more local, with regular hours, so I can spend more time with my family. I have the best of both worlds now and a good work/life balance.

”

Paul Robinson
Caretaker

“A great place to work.”



Jeanette Dent
Learning Intervention Teacher

People Make Places

In our Trust and across our family of schools we value all our colleagues, and invest significantly in their professional development. Our people really matter to us, and we work hard to continually develop their skills, experiences and have a bespoke CPD programme for everyone to access. We are keen to ‘talent spot’ and grow and develop future leaders, and there are a wide range of opportunities available to you should you wish to progress in your role and your career.

“

A change is brought about because ordinary people do extraordinary things.

”

- Barack Obama

Clare Hobson
Receptionist



Batley Girls' High School
Windmill Lane, Batley,
West Yorkshire, WF17 0LD

📞 01924 350080 🌐 www.batleygirls.co.uk



Field Lane J, I & N School
Albion Street, Batley,
West Yorkshire, WF17 5AH

📞 01924 326378 🌐 www.fieldlaneschool.co.uk



Upper Batley High School
Batley Field Hill, Batley, West
Yorkshire, WF17 0BJ

📞 01924 326343 🌐 www.ubhs.co.uk



Batley Grammar School
Carlinghow Hill, Batley,
West Yorkshire, WF17 0AD

📞 01924 474980 🌐 www.batleygrammar.co.uk



Healey J I & N School
Healey Lane, Batley,
West Yorkshire, WF17 0BN

📞 01924 326386 🌐 www.healeyschool.co.uk



Manorfield I & N School
Manor Way, Batley,
West Yorkshire, WF17 7DQ

📞 01924 326718 🌐 www.manorfieldschool.co.uk

Welcome to **Batley**

Batley is a great place to work, and a fantastic community. Our family of schools are aligned by our strong core values, and unique in our individual approach to meet the needs of all our young people. We value collaboration across our family of schools, and a strong mutual respect lies at the heart of everything we do. We celebrate the rich history and cultural diversity within our **community**, and it is the **unity** in community that is the key. We all have far more in common than that which divides us. In Batley we are all about beds, biscuits and brilliant education.

Batley Multi Academy Trust
c/o Batley Girls' High School, Windmill Lane,
Batley, West Yorkshire, WF17 0LD

📞 01924 350080 🌐 www.batleymat.co.uk



**Choose a job that you love and you
never have to work a day in your life.**

- Aristotle

